

ADEP PROCUREMENTS PORTFOLIO

ITALY- NIGERIA

BESPOKE & TURNKEY ARCHITECTURAL SOLUTIONS



ADEP

We are a group of young professional Architects, Interior Designers & bespoke contractors, we are based in Turin Italy with works accross the globe, we are registred in ITALY, Nigeria as Procurements and contractors comapny since our main works are in West Africa and Recently we got involved i few bespoke high end works in UK. We Do speak English,Italian French & Arabic.



Managing Director
arch. Tarek SAADE OAT, RIBA



Consultant
arch. Massimo LOVERA OAT



Technical Advisor
arch. Luigi HOSQUET ARB, OAT, RIBA



Interior Designer
arch. Francesca LOPETUSO OAT



SPECIALIST AREAS 's, BESPOKE ARCHITECTURE, DESIGN
EXECUTIVE DESIGN, STUDIES, PRODUCTIONS, LOGISTICS, INSTALLATION AND HANDLING OVER.

ADEP PROCUREMENTS PORTFOLIO

COMPANY PRESENTATION

ARCHITECTURAL, DESIGN & ENGINEERING PROCUREMENT (ADEP) We are a group of professional Architects, Interior Designers, Space Planners, Educationist, MEP Engineers and Project Managers. We combine our skills and expertise to offer a multi-disciplinary service and thereby achieving excellent results in the process. Our aim is to provide the best service to all of our clients, while at the same time providing visually pleasing, simple to use & easy to maintain ARCHITECTURE & FF&E projects.

OUR CLIENTS:

Architects:

1

- Creative partnerships in the pre and post tender process
- Exemplar layouts, 3D models, renders & walkthroughs, as required
- Opportunities to let us take the lead role in the FF&E client engagement meetings
- Opportunities to let us take the lead role in the FF&E & M&E co-ordination & interface

Chains, Governments & Councils:

2

- Friendly, creative, interactive, professional & teamwork based approach to FF&E layouts, specification and selection
- Effective consultation and early dialogue which is critical to success
- Full cost transparency from tender to final installation
- A flexible approach to assist you and your team with your requirements
- A full set of specification sheets, so you are clear what is being provided

Chains, Governments & Councils:

3

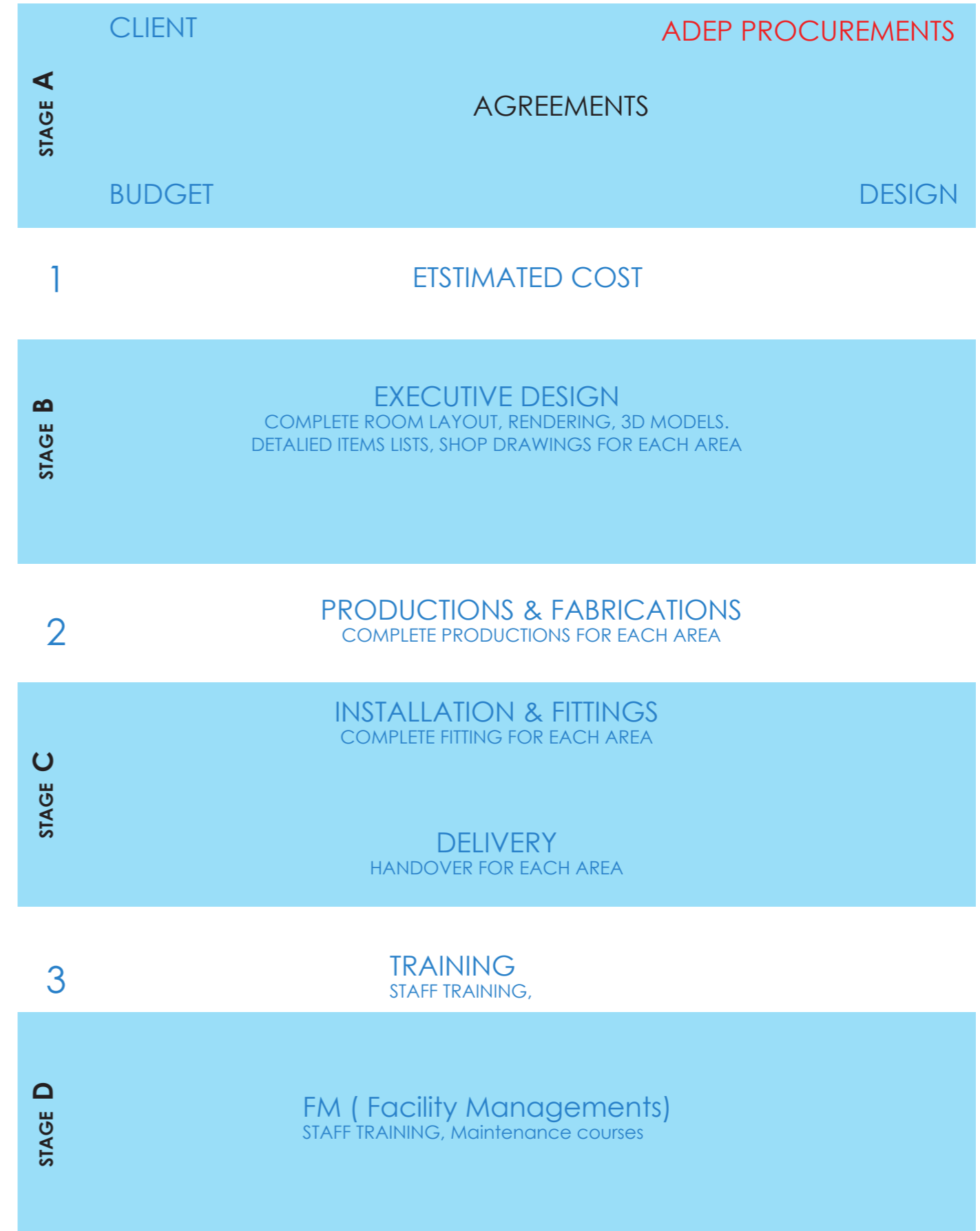
- Friendly, creative, interactive, professional & teamwork based approach to FF&E layouts, specification and selection
- Effective consultation and early dialogue which is critical to success
- Full cost transparency from tender to final installation
- A flexible approach to assist you and your team with your requirements
- A full set of specification sheets, so you are clear what is being provided

Builders & Main Contractors:

4

- Upfront cost certainty (fully scheduled & itemised FF&E listing)
- Market tested costings
- Flexible Installation & Project Management capabilities
- Main Contractor Design & Construction scheme

WORKS SCHEME



ADEP PROCUREMENTS PORTFOLIO

EDUCATION

Products

- Pupil Desks and Chairs
- Classroom Storage
- Fitted Furniture
- Food Technology Furniture & Equipment
- Science Furniture & Equipment
- C.D.T. Furniture & Machinery
- Library Furniture & Equipment
- IT Furniture
- ASN / SEN / SFL Furniture & Equipment
- Drama Furniture & Equipment
- Art & Design Furniture & Equipment
- Sports Equipment
- Cloakroom Furniture
- Dining Room Furniture
- Assembly Hall Furniture & Equipment
- Support Area Furniture & Equipment
- Sanitary Ware
- Curtains & Blinds
- External Furniture

Services

- FF&E Consultancy
- Client Engagement Meetings
- Space Planning & Room Layouts
- FF&E Audits
- Room Data Sheet (RDS) Creation & Consolidation
- M&E Co-ordination & Interface
- Bespoke Design
- Project Management
- Full Fit Out & Installation
- Commissioning & Training
- O&M Manuals & Aftercare
- Full FF&E Commercial Costings
- Room by Room / Item by Item Costings
- BSF / PPP / PFI Partners
- Asset Management
- Life Cycle Costing Database

STUDENT ACCOMMODATIONS

Products

- Bedroom Furniture
- Mattresses
- Bedding Bales
- Curtains & Blinds
- Seating
- Dining Room Furniture
- Lounge Furniture
- Kitchens
- Whitegoods
- Browngoods
- Sanitary Ware
- Recycling Bins
- Fire Fighting Equipment
- Post Boxes
- Laundry Equipment
- Tableware
- Kitchen Utensils
- Support Area Furniture & Equipment

Services

- FF&E Consultancy
- Product Design
- Client Engagement Meetings
- Space Planning & Room Layouts
- Room Data Sheet (RDS) Creation & Consolidation
- M&E Co-ordination & Interface
- Project Management
- Full Fit Out & Installation
- Commissioning & Training
- O&M Manuals & Aftercare
- Full FF&E Commercial Costings
- Room by Room / Item by Item Costings
- PPP / PFI Partners
- Asset Management
- Life Cycle Costing Database

KITCHENS

Products

- FORTIS Kitchen Doors
- Commercial Catering Equipment
- Servery Counters - Bespoke & Standard
- Refridgeration Equipment
- Food Preparation Equipment
- Dishwashing Equipment
- Preparation Benches
- Stainless Steel Fabrication
- Sanitary Ware
- Staff Room Furniture
- Chefs Office Furniture

Services

- Design Consultancy
- Client & End User Engagements
- Space Planning & Design
- Services Drawings
- M&E Co-ordination & Interface
- Bespoke Design
- Project Management
- Installation & Commissioning
- O&M Manuals
- Product Training
- Maintenance Contracts
- Asset Management
- Life Cycle Costing Database
- Commissioning & Training
- O&M Manuals & Aftercare
- Full FF&E Commercial Costings
- Room by Room / Item by Item Costings
- BSF / PPP / PFI Partners
- Asset Management
- Life Cycle Costing Database

OFFICES & RETAIL

Products

- Office & Shop Furniture
 - Hot Desking
 - Executive Office Furniture
 - Boardroom Furniture
 - Meeting Room Furniture
 - Bespoke & Standard Reception Counters
 - Media Walls
 - Storage Wall
 - Breakout Area Furniture
 - Copier Stations
 - Recycling Centres
 - Kitchens & Staff Areas
 - Partitioning
 - Wall & Floor Coverings
 - Suspended Ceilings
- ### Services
- Space Planning & Room Layouts
 - Bespoke Design
 - Furniture & Filing Audits
 - Full Fit Out & Installation
 - Co-ordination & Interface with Other Trades
 - Project Management
 - Asset Management
 - Life Cycle Costing Database

ADEP PROCUREMENTS PORTFOLIO

HOSPITALITY

Products

- Whitegoods
- Browngoods
- Residential Furniture & Equipment
- Office Furniture & Equipment
- Educational Furniture & Equipment
- Healthcare Furniture & Equipment
- Sanitary Ware
- Crockery
- Move Management
- Janitorial Equipment
- Replacement Equipment
- Wall, Floor & Ceiling Coverings
- Curtains & Blinds

Services

- Relocation & Reconfiguration Service
- FF&E Consultancy
- Space Planning & Room Layouts
- FF&E Audits
- Commissioning & Training
- O&M Manuals & Aftercare
- Asset Management
- Life Cycle Costing Database
- Delivery & Installation Service
- Connection of Electrical Goods
- Connection of Water & Waste
- Removal & Disposal of Old Item

FM (Facilities Managements)

Services

- Relocation & Reconfiguration Service
- FF&E Consultancy
- Space Planning & Room Layouts
- FF&E Audits
- Commissioning & Training
- O&M Manuals & Aftercare
- Asset Management
- Life Cycle Costing Database
- Delivery & Installation Service
- Connection of Electrical Goods
- Connection of Water & Waste
- Removal & Disposal of Old Items

PEST CONTROLS

Services

- Relocation Service
- bats deterrents solution
- rodents deterrents
- electronic deterrents for birds
- insects deterrents and fumigation

WHY USING ADE PROCUREMENT ?

BECAUSE :

At ADEP Procurement we source our components and products from: Europe, China and United States of America, where we have been able to leverage our purchasing power to obtain very competitive prices. These savings are ultimately passed on to our clients. In addition, due to the guaranteed providence of the source of our products we offer a warrantee to our clients together with aftercare service and training. This is not usually the case for products sourced from the Far East where the products are generally not as durable and no warrantees or after care service is provided.

OUR price is **GUARANTEED**, included delivery and installation without any **HIDDEN CHARGES**.

SPECIALIST AREAS 's EXECUTIVE
DESIGN, STUDIES, PRODUCTIONS, LOGISTICS, INSTALLATION DELIVERY AND
HANDLING OVER.

DELIVERED PROJECTS:
EXPO CENTRE LAGOS EKO HOTEL 2009-2011



DELIVERED PROJECTS:
EXPO CENTRE LAGOS EKO HOTEL 2010-201, COMPLETE GLASS WORKS



DELIVERED PROJECTS:
BILLIONAIRE CLUB ISTANBUL TURKEY 2011-2012



DELIVERED PROJECTS:
EKO TOWERS ENTRANCE & INTERIORS, LAGOS NIGERIA 2011-2013



DELIVERED PROJECTS:

MIXED PROJECTS 2009-2014:

- *. MTN-WALKIN CENTRE LAGOS [STAIRCASE],
- *. PRIVATE RESIDENCE LAGOS [STAIRCASE]
- *. PRIVATE RESIDENCE LAGOS
[EXECUTIVE AND SHOPDRAWINGS OF THE PERGOLA]



ONGOING PROJECTS
UNIGLOBE HOTEL ABUJA NIGERIA

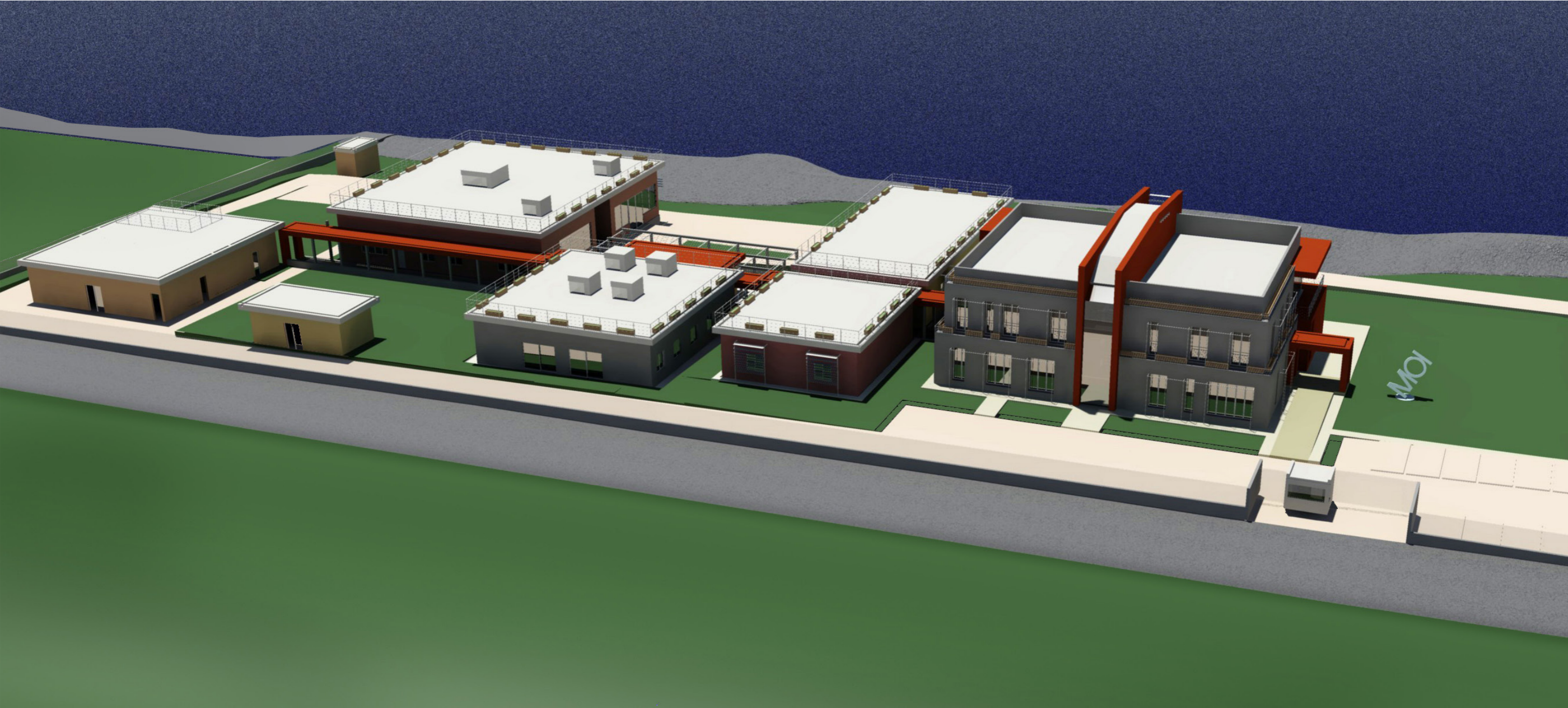


Uniglobe Hotel Abuja Nigeria
26 Feb 2013

ONGOING PROJECTS
UNIGLOBE HOTEL ABUJA NIGERIA



ONGOING PROJECTS
OCEANIC RESEARCH CENTER MAURITIUS

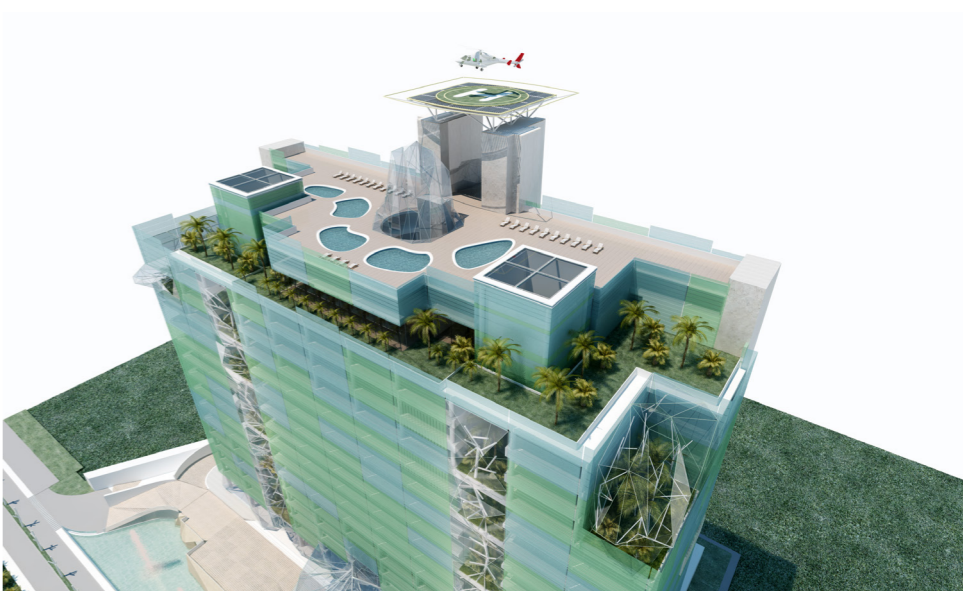
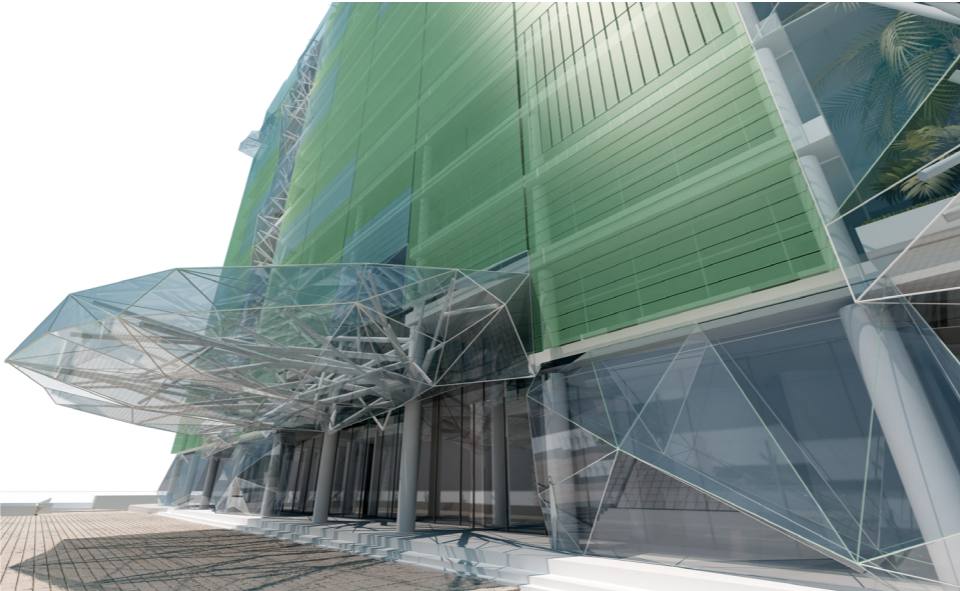
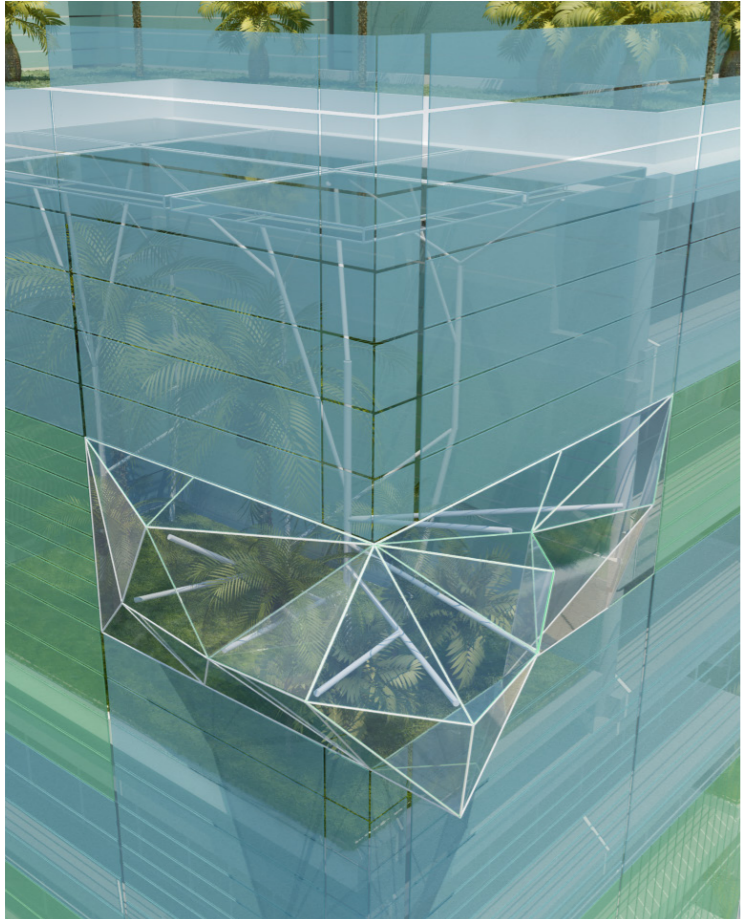
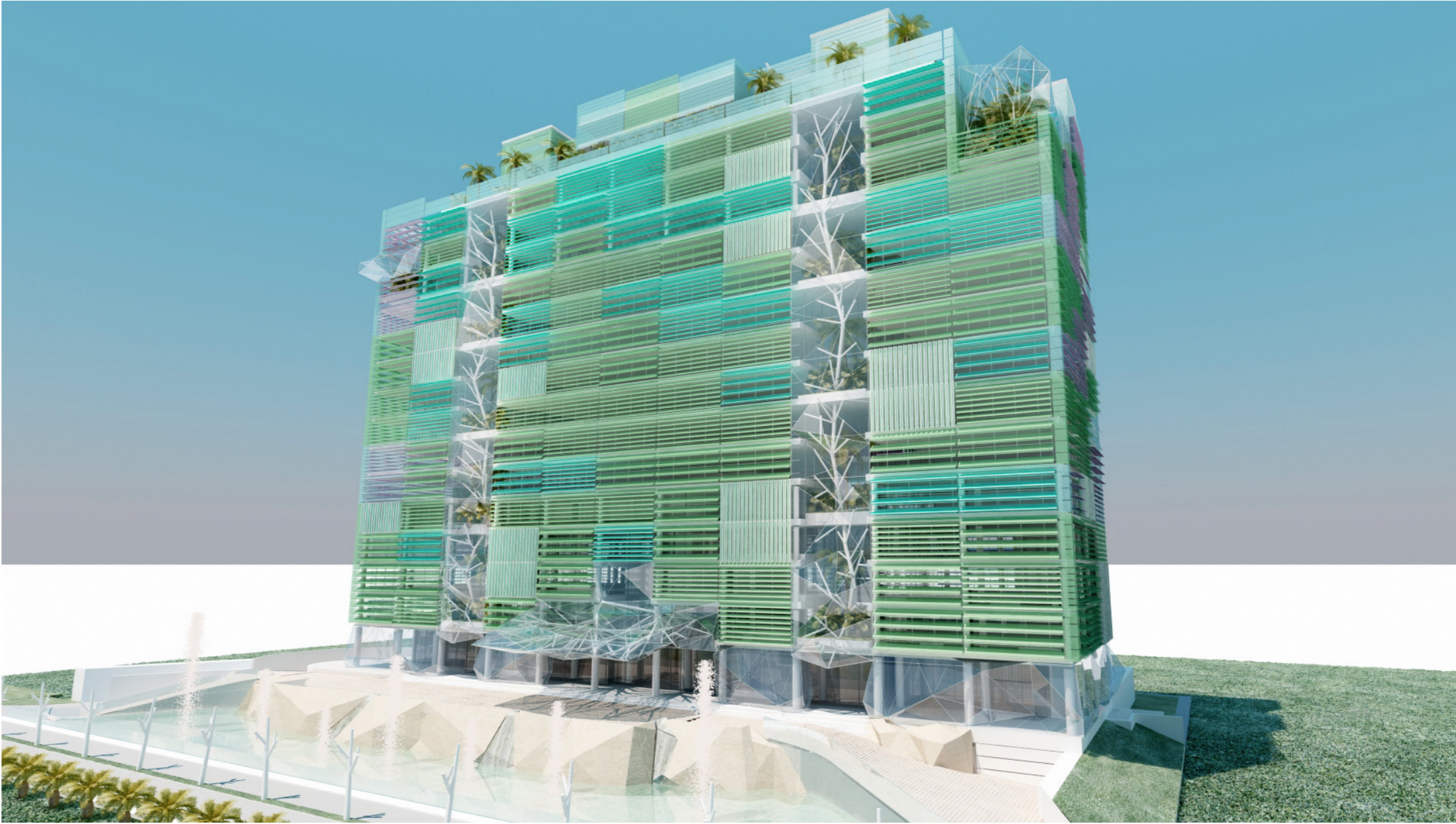
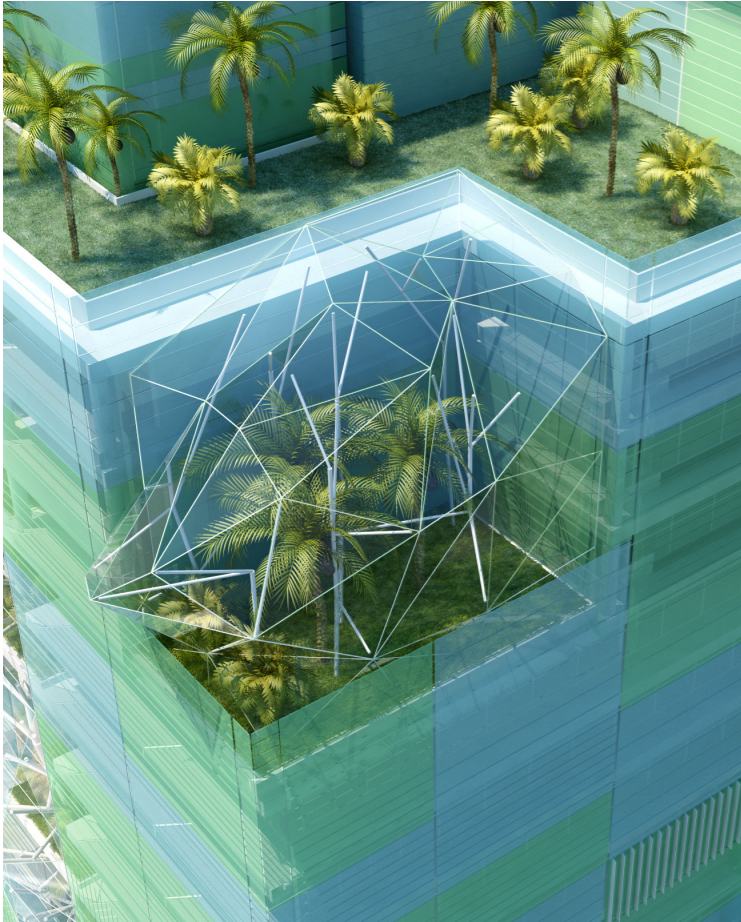


ONGOING PROJECTS
INTERNATIONAL SPORT COMPLEX TRIOLET MAURITIUS



Design Proposal

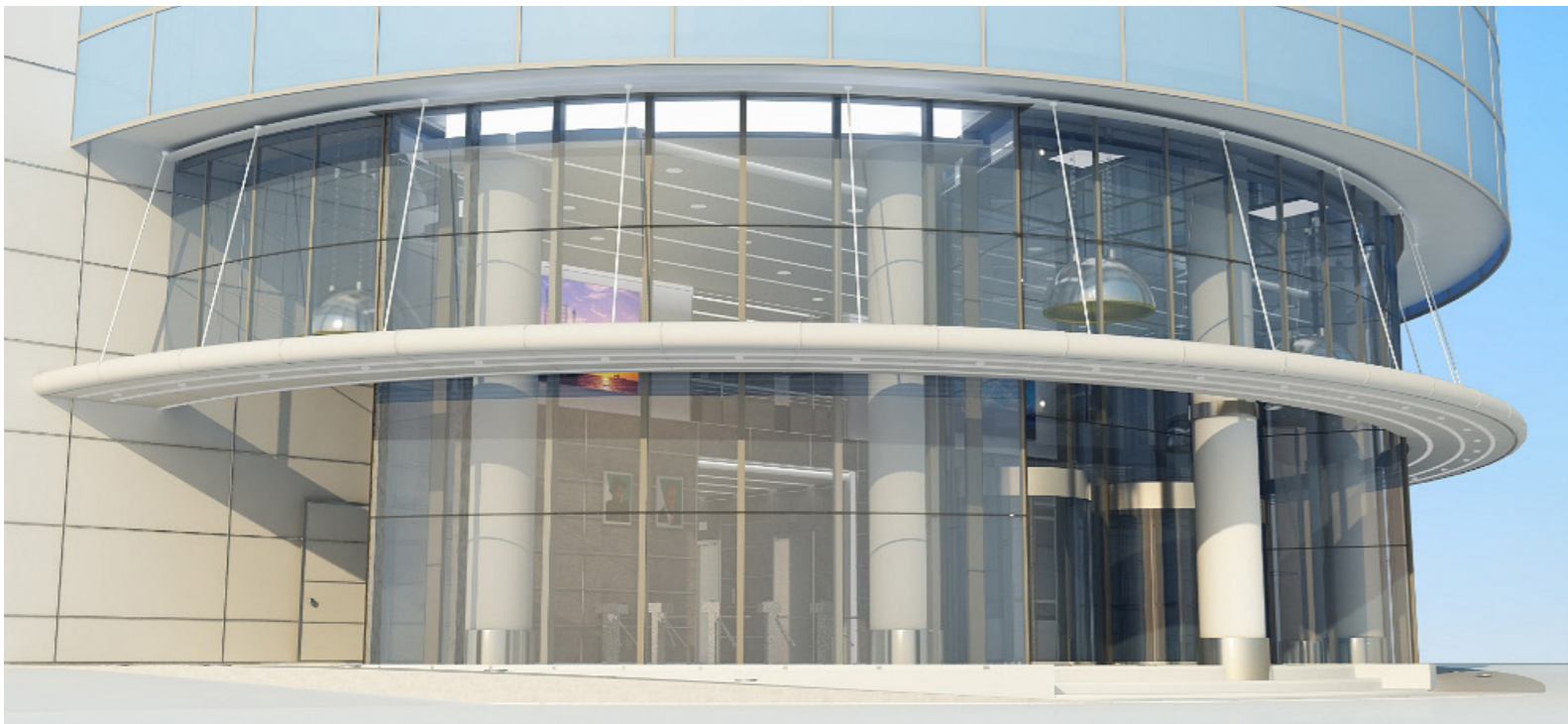
LAGOS WORLD TRADE CENTRE - NIGERIA



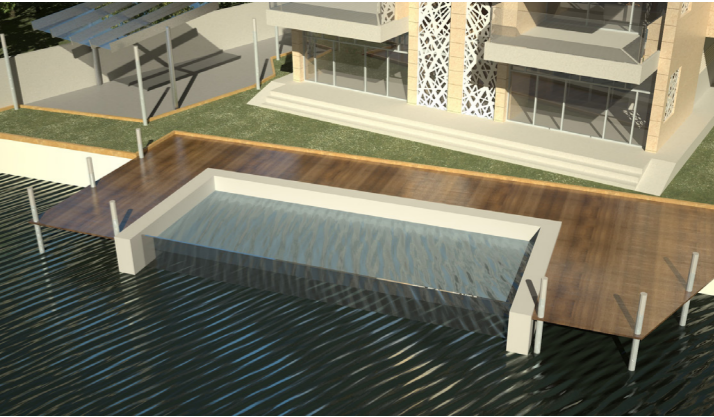
Design Proposal
OFFICE TOWER LAGOS - NIGERIA



DELIVERED PROJECT
EKO TOWER | LAGOS - NIGERIA



On Going PROJECT
OLMPUS Villas LAGOS STATE - NIGERIA



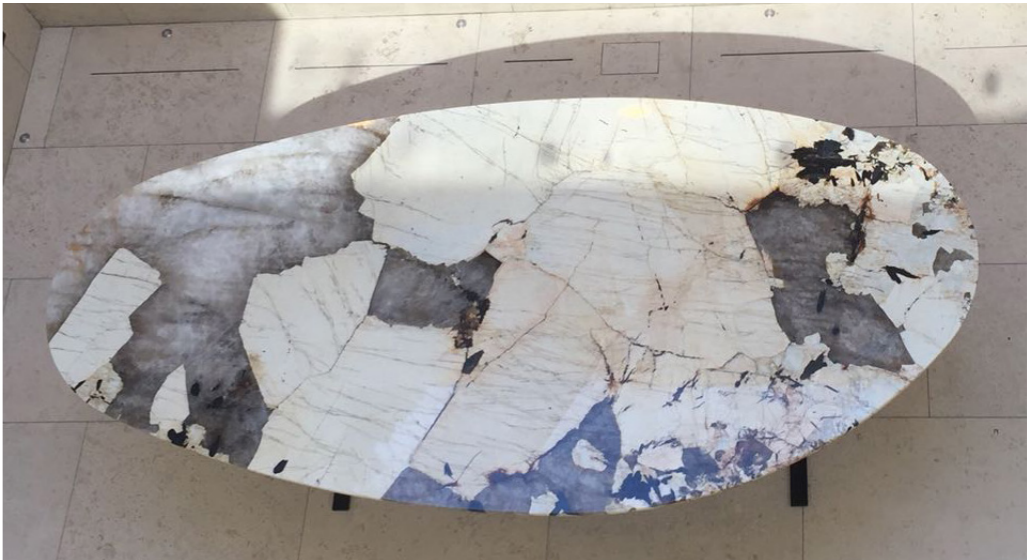
DELIVERED PROJECT-2017
NHP HALL, ENUGU STATE NIGERIA



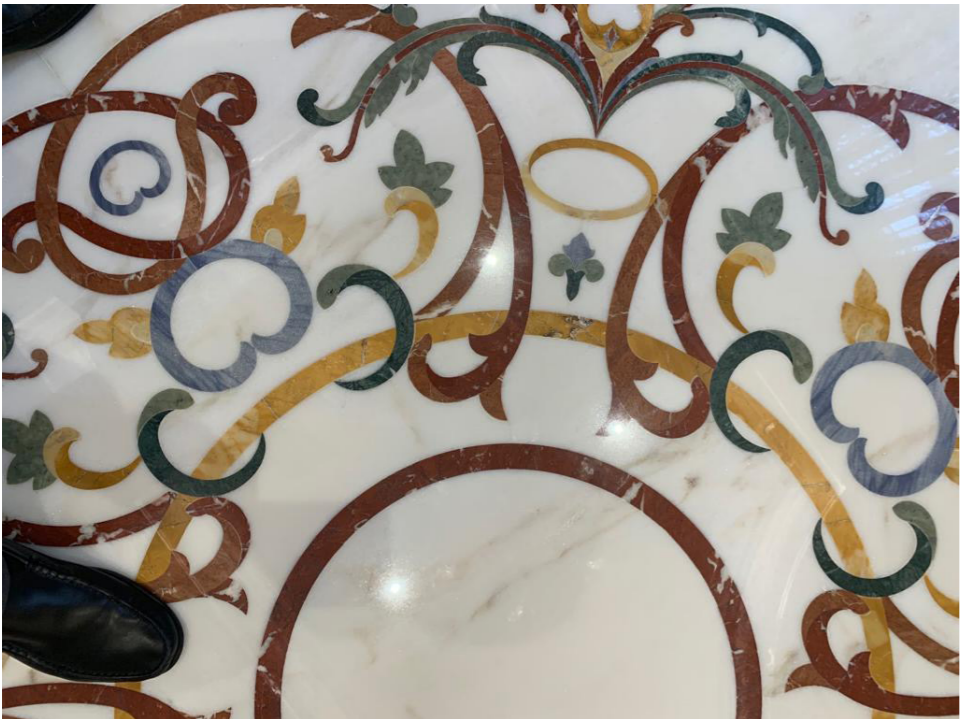
DELIVERED PROJECT-2019
CENTRAL LIBRARY VAUDA TOWN PIEDMONT- ITALY
STEGET SRL ITALY



DELIVERED PROJECT-2017-2018-2019
Collection of marble works, in Lagos, Accra and London



DELIVERED PROJECT-2017-2018-2019
Collection of marble works, in Lagos, Accra and London



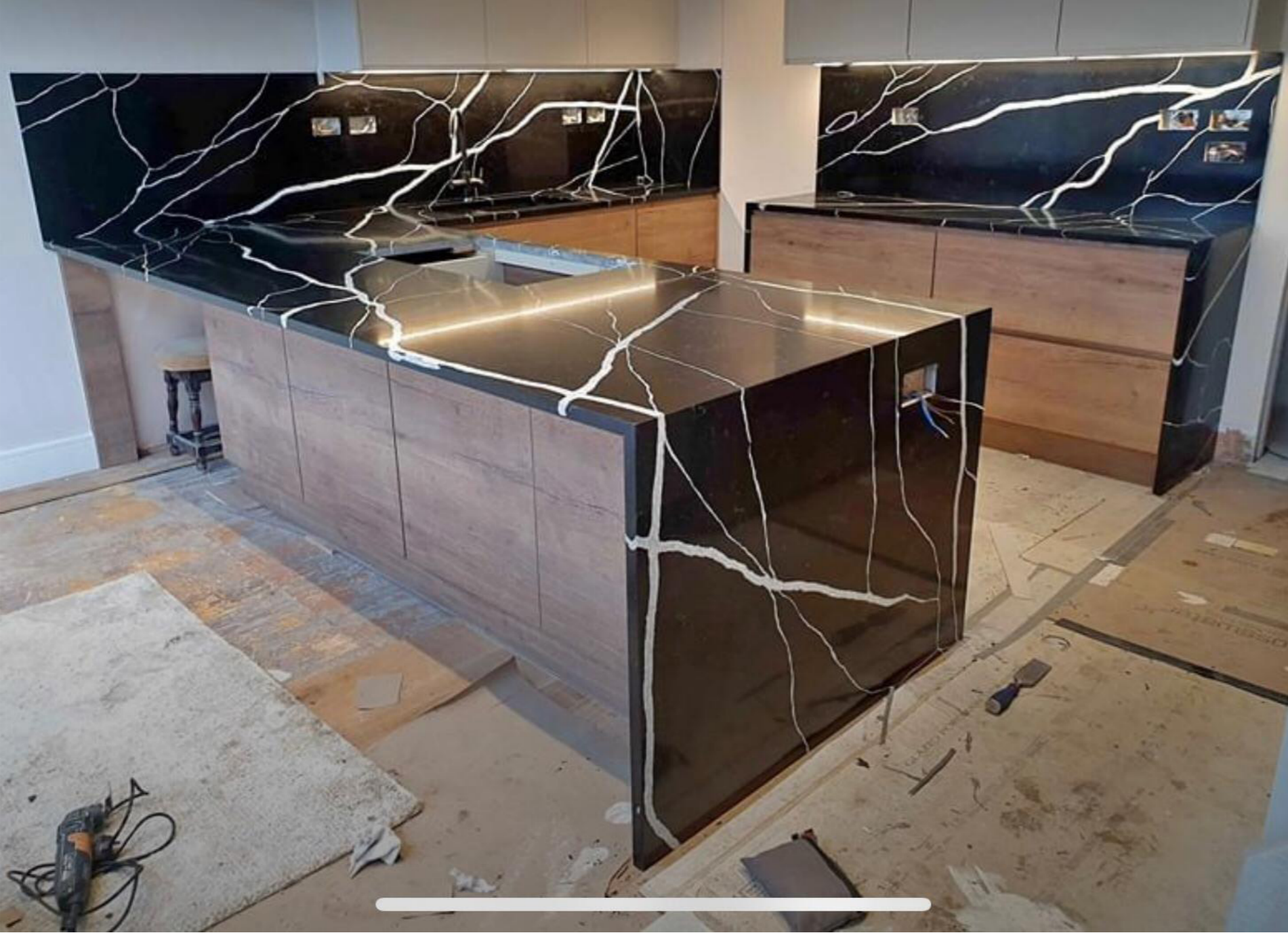
DELIVERED PROJECT-2017-2018-2019
Collection of marble works, in Lagos, Accra and London



DELIVERED PROJECT-2017-2018-2019
Collection of marble works, in Lagos, Accra and London



DELIVERED PROJECT-2017-2018-2019
Collection of marble works, in Lagos, Accra and London



MAJOR CURRENT/ ONGOING PROJECTS:

- *- LANDMARK TOWER ENTRANCE WITH CANOPIES [VI-LAGOS]
- *- AFREN TOWER DECK & POOL DESIGN AND INSTALLATIONS EKO ATLANTIC LAGOS
- *- HERITAGE PLACE IKOYI LAGOS Executive panels design
- *- LA BEACH TOWER ACCRA GHANA
- *- NIGERIAN ARMY TRAINING RESORTS AND OFFICERS CLUB
- *- OCEANIC RESEARCH CENTER MAURITIUS
- *- INTERNATIONAL MULTI SPORT COMPLEX TRIOLET MAURITIUS
- *- TSUNAMI REFUGE CENTER MAURITIUS
- *- SAUDI RAILS NETWORK BESPOKE WORKS RIYADH WITH ZAHA HADID ARCHITECTS
- *- Few residences across Lagos state and Nigeria

ADE PROCUREMENTS

ADEP

ITALY-NIGERIA

www.adeprocurement.net

Arch. Tarek SAADE RIBA, OAT
UK +44 (0) 789 29 75 170
ITA +39 348 897 4385
NG +234 (0) 7066 244 353
Tarek.Saade@gmail.com
Design & Architecture:
Procurements:
<http://www.adeprocurement.net>